



MOUNT LAWLEY SENIOR HIGH SCHOOL LAWLEY UPDATE Term 2 July 2012 No. 11

65 Woodsome St, Mount Lawley WA 6050

GENERAL SCHOOL ENQUIRIES

PHONE: 9471 0300 FACSIMILE: 9271 1126

MIDDLE SCHOOL (YRS 8-9)

PHONE: 9471 0350 FACSIMILE: 9471 0338

SENIOR SCHOOL (YRS 10-12)

PHONE: 9471 0320 FACSIMILE: 9471 0329

<http://www.lawley.wa.edu.au>
enquiries@lawley.wa.edu.au

With the first Update for Term 3, a warm welcome to the term to all students and parents is extended. In terms of new and returning staff, the following are also welcomed to Mount Lawley Senior High School.

Ms Bev Burnside	-Deputy Principal, Middle School -Returning from Long Service Leave (LSL).
Miss Nickie Summers	Publications -Replacing Ms Tumak, who is on Long Service Leave (LSL).
Mr Chen Yap	Mathematics - Returning from Long Service Leave (LSL).
Ms Felicia Harris	Library - Replacing Ms Lyn Hutchison who is Long Service Leave (LSL),.
Carina Dorsch	Education Assistant -New
Joanie Dyson	Education Assistant -Additional role
Justin Eckhardt	Education Assistant -New
Michael Jones	Education Assistant -New
Janette Bettella -	School Officer - New
Robyn Gianotti	School Officer - New

With the ability as an IPS to determine the school staffing profile, Mrs Catherine Smith, Mrs Suzie Barnes and Mrs Judy Zivkovic have been appointed to their positions on a permanent basis. Previously, they could only be employed annually.

It is also a great pleasure to welcome as a guest to the school, a teacher from our sister school in Hangzhou, Hangzhou Number 14 Middle School. Ms Catherine Yu is visiting Australia for several months and will be spending some time at school. Ms Yu, an English teacher in Hangzhou, would like to improve her English and is also willing to help our Mandarin students with their language skills. It is hoped that Ms Yu will enjoy her time in Perth, including Mount Lawley Senior High School, and return to Hangzhou, further cementing our long term relationship.

The school is hosting several Rotary exchange students – from Taiwan and Denmark. Both are welcomed.

Each year in Western Australia's sister province of Zhejiang, China, students compete in an English competition. The prize is a trip to Perth. The activity is co-ordinated by the Department of State Development and involves the winning students visiting a number of key locations in Perth. They also spend some time in a local school.

The students are accommodated in home stay arrangements. Nine of the group are being hosted by Mount Lawley SHS and staying with

A THOUGHT

Underneath this flashy exterior is an enormous lack of character.

Oscar Levant

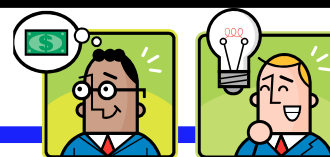
CONGRATULATIONS



Chloe has been awarded the Secondary School Music Scholarship with the City of Bayswater. Well done Chloe.



Jordan has been selected to attend the National Ice Hockey Tournament in Adelaide. Good luck Jordan.



Parents

Have you ever thought,
“We wish our school had.....”
(fill in the blank space!)

There is **\$50,000** up for grabs
The P&C wants YOUR input
into how these \$\$\$ can be spent

Got a **great idea?**

Contact the P&C

at john@hydrogold.com

EVENTS CALENDAR

Tuesday 31 July Languages Parent Meeting 7.30pm, Languages Office

Monday 6 August MSE Testing Year 9

Thursday 2 August Music Support Committee

Tuesday 7 August Yr 10 Lighting Carnival, Soccer and Basketball

Wednesday 8 August SVAPA Parent Meeting 7.00pm, Tricycle Theatre

Friday 10 August Music Camp



families. The assistance provided to this activity through hosting a student is valued greatly. Without this support from parents the winning students would not have the same immersion with Australian culture. Thanks you to the families involved.

As has been featured in the press and updates provided through the school and P&C websites, Mount Lawley Primary School was destroyed in an arson attack and relocated in transportable buildings on the soccer oval of this school. The effort to establish the school was extra-ordinary. The school break was characterised by frenetic activity as grounds were prepared, buildings erected and services provided. The school commenced operations on Tuesday.

A meeting between the administrations of the two schools has determined some operational procedures. School timings remain unchanged. The primary school commences at 8:50am and finishes at 3:10pm. This provides some separation to assist the flow of students, especially at day's end.

The morning recess times for Mount Lawley PS will be 10:30am – 10:50am and lunch 12:20pm – 1:05pm. The break for afternoon recess is 2:05pm – 2:10pm. Primary students will not be accessing the secondary ovals for breaks, but will use Hamer Park. Neither will they be using the Café.

Traffic flow on Woodsome Street and road safety are concerns with another 400 students on site. Whilst primary parents have been asked to drop students on the far side of Hamer Park, they will have to cross Woodsome Street. A "lollypop" attendant has been employed and will assist crossing. Secondary students should continue to cross at the current point near the car park. This is to reduce pressure at crossing points through separating the student groups. The City of Stirling has advised that the far side of Hamer Park is for primary students and should NOT be used by parents of this school between 8:30am and 9:30am and from 2:30pm to 3:30pm. Parents are also asked NOT to use the Woodsome Street car park as a student drop-off/pick up during peak periods in order to promote road safety.



The City of Stirling has decided, at this stage, to make no change to the parking bays on Woodsome Street. However, this may be reviewed if the traffic situation is perceived to be dangerous. The City has arranged for parking to be available in the bowling club car park at the left-hand turn on Woodsome Street. This is the primary school staff only. Student drivers may not use this. The City of Stirling will allow students, staff and parents to use the Inglewood Oval car park, accessed from Central Avenue. Students can then walk to the school through the Stancliffe Road car park. It is acknowledged that the Inglewood Oval car park is not on the school's grounds and there will be no opportunity to monitor vehicles. The Department and its insurer will not accept liability for any student's vehicle if it is damaged or stolen. By driving to school students, and parents, accept the associated risks.

The support of all parents in driving safely near the school and being vigilant for students, crossing the road is requested.

Parents are again reminded of Operation Redirect. This is a joint agency approach to targeting truancy. Children of school age that are in the community during school hours without a responsible adult will be stopped by police officers and returned to their school. Parents will be advised if their child is returned to school.

The message to students is a simple one. Stay at school and do not be caught in Operation Redirect.

Attendance at school is important. The time spent in class assists learning. Time in class gives students the best opportunity to learn from their teacher and undertake work to embed knowledge and skills. Attending school is a legal requirement and the support of parents is sought to ensure that students are at school. When absent, parents have a legal requirement to provide a reason. This may be done through the traditional note, return of SMS, email or by telephone. Again, the support of parents is requested to improve attendance.

I wish all students a productive Term 3.

Milton Butcher, Principal



Term 3 Saturday WACE Revision Courses

Act now to **MAXIMISE** your exam success

July 28th - September 22nd at Corpus Christi College, Bateman

To view our timetables go to

www.academicassociates.com.au/content/timetables.html

Operation Redirect – Daytime Safe

Operation Redirect is an initiative of the Western Australian Police to reduce truancy and make communities safer.

Any child found by a police officer outside of school grounds unaccompanied by an adult and who do not have a leave pass will be returned to school. Parents will be advised of the circumstances.

Students, stay at school.



COMMUNITY



FOSTER NOW... ASK ME HOW... WANSLEA FAMILY SERVICES

Do you have room in your heart and home for a child in need?
 If you would like to find out how you can make a difference for a night, a week, months or years, please come along to WANSLEA's information session on
SATURDAY 11 August from 12.00 -2.00pm
at 311-313 Abernethy Road,
Cloverdale WA 6105
 Light refreshments provided. To RSVP and for more information please call 9245 2441 or email support@wanslea.asn.au
 Check us out online: www.fosternow.com.au

ATTENTION Year 9 Music Students

Due to the generosity of a Mount Lawley Senior High School family, a scholarship is available to a student to attend the Year 9 Camp. The Scholarship is valued at \$235. Applications may be made in a letter to Mrs Burnside by 24 August 2012.

To qualify for the Scholarship, families will need to demonstrate financial hardship.

The family donating the Scholarship wish to remain anonymous. They are thanked for their generous donation.



Walther School of Music

Is a community dedicated to the education, production/ recording & livelihood of students & musicians in Perth, so get in on the excitement. We are a team of young, professional musicians and WAAPA graduates
 Find us at
[Http://walthermusic.com/](http://walthermusic.com/)



Do you want to maximise your exam performance?
Are you finding it difficult to study for your exams?

Then Academic Task Force has a course for you!

In our courses you will receive • Top exam tips and strategies from the experts • Practice in answering exam questions • Techniques to maximise your performance in your exams • Guided revision from top WACE teachers

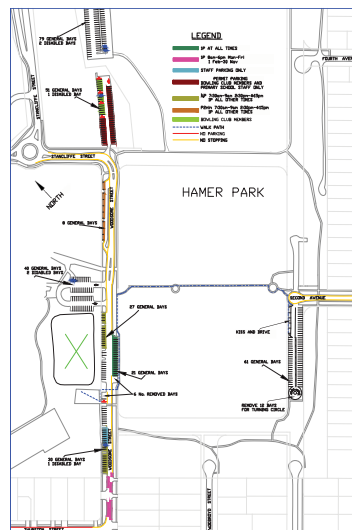
Master Classes: Starting from the 29th of July
 Be inspired by expert teachers in our small group classes which follow a specific teaching program designed to **extend, challenge** and polish your performance.

WACE Help Weekend Classes: Starting from the 28th of July
 Be guided by experienced teachers in our small group tutorials, receive individual attention to strengthen your subject understanding and maximise your performance in your exams.

Also available:

Yr 7, 8, 9, & 10 Saturday Classes: Starting from the 28th of July
 Keep up to date with your work and get extra help in English and/or Maths! Be guided by experienced teachers in our small group tutorials and receive individual attention to build your skills and understanding in these subjects.

For more information and enrolment contact **Academic Task Force**
 Ph: 9314 9500 Email: learn@academictaskforce.com.au Website: www.academictaskforce.com.au



Parking Map

Please be aware of new parking requirements. This map is available on the school website in full colour.

www.lawley.wa.edu.au



Department of Health
Department of Treasury

NEW CHILDREN'S HOSPITAL PROJECT NAME THE CRANES COMPETITION

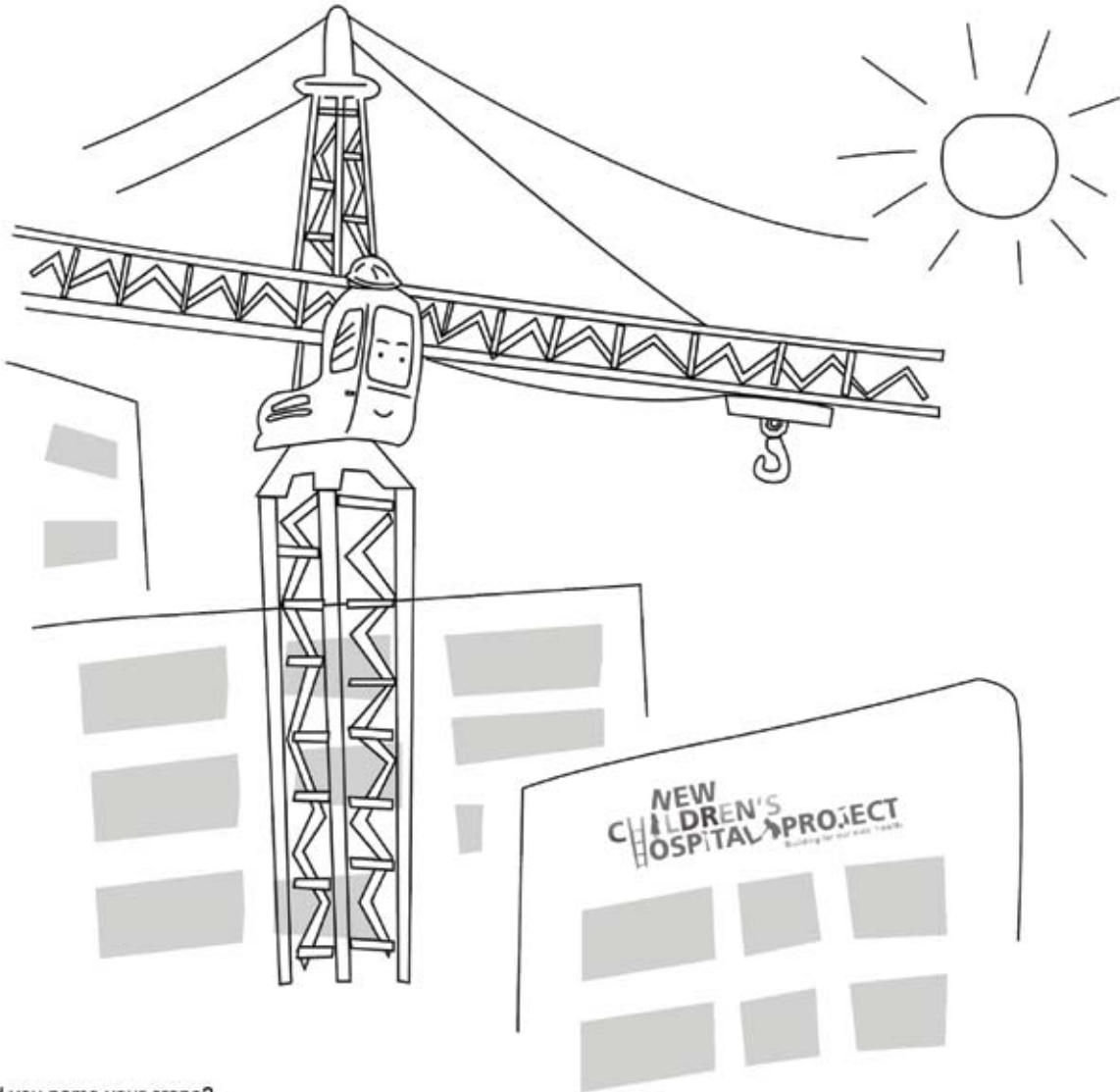


Would you like to name one of the cranes that will build our new children's hospital?

The New Children's Hospital (NCH) Project team has five cranes coming on site soon and we need your help to name them. Simply colour in the crane below and tell us what you would like a crane to be called and why, and you will be in with a chance to name a crane on the NCH site.

Entries close 31 August 2012, so start colouring!

Mail your completed entries to: Name the Cranes Competition, New Children's Hospital Project, GPO Box D184, WA 6840



What would you name your crane? _____

Why? _____

Your Name _____ Your Age _____

Your address _____

Have you been a PMH patient? YES/NO (please circle).

Please get your parent or legal guardian to sign below.

I have read and understand the terms and conditions of entry located at www.newchildrenshospitalproject.health.wa.gov.au

Parent / guardian name _____ Parent / guardian signature _____ Date ____/____/____

Parent / guardian contact no. _____ Parent / guardian email _____

Five winners will each receive: the opportunity to name a crane on the NCH construction site, a tour of the NCH construction site, an invitation to attend an official crane naming ceremony and to meet their crane's operator, AND a NCH prize pack.